

The one-box, one-company digital signage solution!

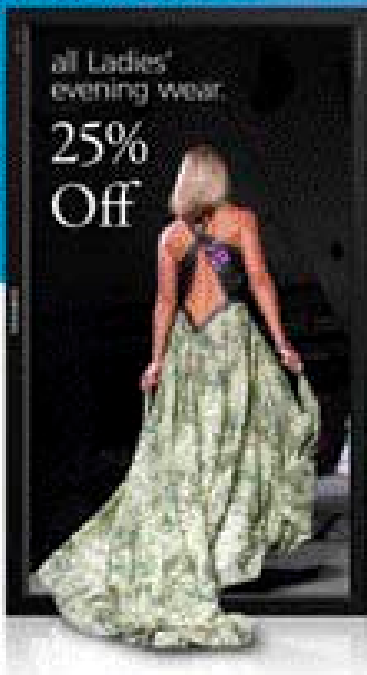
Increase sales.

» Upsell, cross-sell, merchandise, advertise.

Improve communications.

» Inform, educate, notify, alert.

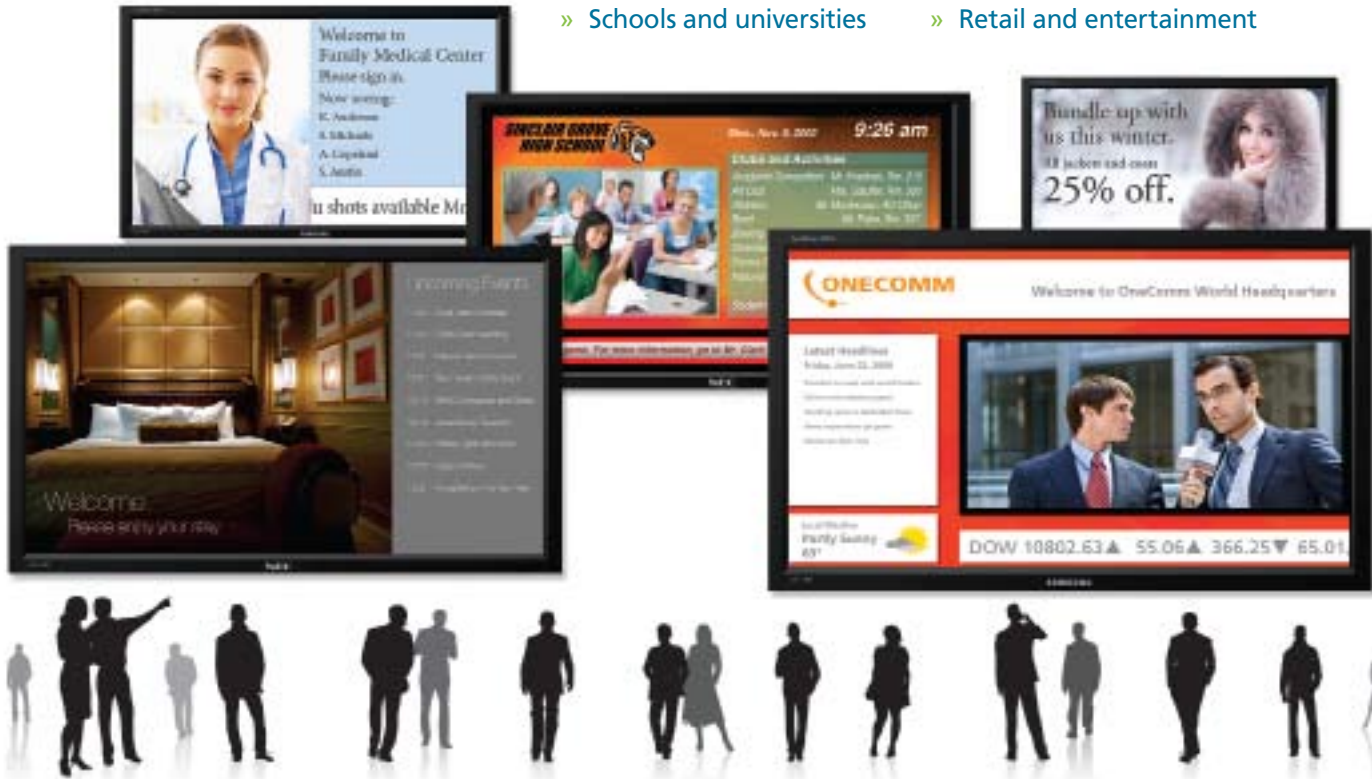
Do it all with iCOMPEL™ from Black Box.



Digital Signage: Grab Their Attention

It's the ideal solution for:

- » Corporate campuses
- » Government offices
- » Schools and universities
- » Healthcare
- » Hotels and restaurants
- » Retail and entertainment



Digital signage: why you should get it.

No other medium makes it possible to deliver compelling content at the right location at the right time for maximum impact. It works whether your goal is to:

- Increase sales and profits.
- Inform, educate, notify, or alert.
- Encourage certain behavior.
- Satisfy customers or employees.
- Improve business processes.
- Or all the above.

People on the go often overlook or ignore posters, flyers, and other traditional printed signage. Strengthen your marketing, as well as your internal communications, by replacing boring static signage with eye-catching digital signage in lobbies, waiting rooms, or any place frequented by your target audience.

Digital signage: how the flexibility benefits you.

With today's digital signage technologies, you can:

- Upsell, cross-sell, merchandise, advertise.
- Create welcome messaging, menu boards, and wayfinding screens.
- Share information faster, including meeting announcements, schedules, event times, and public health information.
- Improve the in-store experience for customers, and create dynamic product and service promotions.
- Use existing content to create compelling messaging.
- Integrate live video and Internet feeds like stock and news tickers, and other XML or RSS feeds so you're not forced to create and supply all the signage content by yourself.
- Use all sorts of media, including PowerPoint®, static images, stored and live video, and audio file formats.
- Update content on the fly from any PC with an Internet connection.

Digital signage: now much more affordable.

Digital signage is more affordable and easier to implement than ever before. Out-of-the-box solutions cost as little as \$3000 to \$4000. Even small businesses can afford and benefit from digital signage.

Plus, you can:

- Benefit from a choice of content-layout tools and ready-made layouts, empowering you to create truly professional-looking presentations—without adding creative and technical staff!
- Get up and running with minimal training.
- Easily deploy and manage your digital signage from any browser-based connection.
- Get most or all of what you need upfront, so you're not nickle-and-dimed year after year with ongoing licensing or SaaS fees.
- Integrate it into an existing IT network without having to replace existing equipment, set up a separate operating architecture, or buy extra PCs.

Digital signage: how to get started.

We know choosing a digital signage solution can be an overwhelming task. You may even find yourself suffering from decision paralysis.

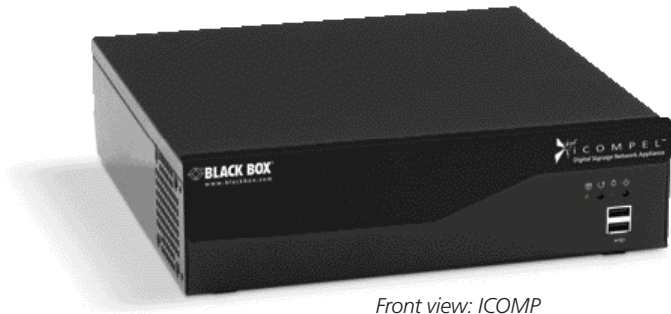
Simplify the decision-making.

Simplify by going with an out-of-the-box solution that gives you *everything* you need: flexibility, affordability, and the ability to get your digital signage up and running fast—without having to navigate a sea of technical and broadcasting jargon.

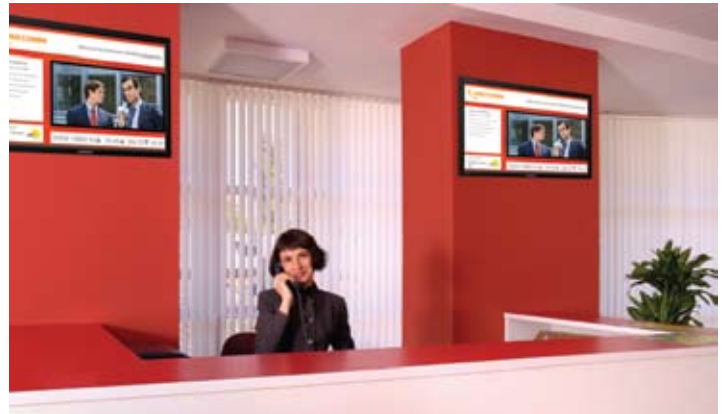
Simplify with Black Box's iCOMPEL™. This family of digital signage appliances turns any user—the average office manager, a business owner, an IT technician, or an integrator—into a multimedia pro. If you still need help, call Black Box for FREE 24/7 Tech Support.

Loaded with features, the iCOMPEL enables you to play recorded or streaming content, manage it from a network, and automate content playing for 24/7 customer engagement.

Set up vibrant, real-time displays with this one-box, one-company digital signage solution!



Front view: iCOMP



- » FREE firmware and software upgrades.
- » No recurring licensing fees. Very low cost of ownership.
- » True plug-and-display technology—sets up FAST.
- » FREE, unparalleled, 24/7 technical support from a respected industry leader in both AV and IT solutions.

Create, distribute, and manage digital signage content easily with iCOMPEL digital signage network appliances from Black Box.

Ideal for both large organizations and small offices, iCOMPEL appliances work right out of the box with all software preinstalled—and no recurring licensing or SaaS fees to deal with later. And software updates are always free.

Why iCOMPEL?

- » Affordable and scalable from one to many displays
- » A one-time investment
- » Keeps digital signage simple
- » No learning curve to overcome; easy for beginners to master
- » Easy to integrate; won't cause IT and security headaches
- » It's from an industry leader who can supply you with everything you need for an end-to-end digital signage system—saving you both time and money!

Because the iCOMPEL units support many media formats, you can combine video with scrolling text, photos, Flash, and Web content. In addition to HTML and RSS media, they handle MPEG, AVI, QuickTime®, and PowerPoint® media; JPEG, GIF, and TIFF images; and WAV and MP3 audio.

You can also order the iCOMPEL appliance with a built-in video capture card. It's ideal for applications where you need to display both stored video and live video—even side by side in zones within the same screen!

Install the iCOMPEL appliances on your network and manage them

via a browser from any PC or Mac® on a wide area network (WAN).

One iCOMPEL unit used as a publisher can send media over the network to an iCOMPEL unit functioning as a subscriber—even on the other side of the world.

Scaling from a standalone installation to a multichannel network with many screens is simply a matter of adding more iCOMPEL units and the iCOMPEL manager to your standard IT network configuration.

Setup is easy. Just connect the iCOMPEL appliance to your network and to an LCD or other display device, power it up, and once it has an IP address from the network, you can use a browser to access the network appliance via a DHCP server. Fixed IP addresses can also be set. (For sample applications, see pages 6–7.)

To upload media, drag and drop from your PC or Mac desktop or folder to the iCOMPEL media folders on the appliance's internal hard disk or use the iCOMPEL user interface to browse for and upload the media files.

iCOMPEL appliances:

- » Are complete all-in-one, plug-and-play devices.
- » Work right out of the box with all software preinstalled and tested.
- » Function as standalone or networked devices. You can set up multiple units as subscribers for a publisher unit.
- » Can be controlled via a standard Web browser.
- » Enable you to update screen content from any PC or Mac with an Internet connection to issue alerts or customize content for specific audiences.
- » Can play recorded video content, as well as live video from a set-top box (on the -VID versions).
- » Feature drag-and-drop tools to manipulate layouts easily.
- » Include FREE professionally designed screen layouts and FREE software updates—no costly add-ons to buy later!
- » Enable you to set up multizone layouts with each zone playing different media from its own playlist.
- » Use store-and-forward type of media distribution, so they don't compromise network bandwidth or resources.
- » Are Linux® based with built-in firewalls.

Key functions performed:

- » Content management
- » Content scheduling
- » Content distribution
- » Playing of:
 - stored media
 - recorded video and even live video (on -VID models)
 - local user "ad hoc" inputs
- » System monitoring

iCOMPEL: Sample Screen Layouts



Corporate office

In a lobby or reception area, digital signage strengthens communications for businesses large and small. The iCOMPEL appliances enable you to easily stream images and scrolling or static text into displays. And because they're

widely compatible with many types of media—including HTML, PowerPoint®, Flash, MPEG, and QuickTime® as well as AVI, JPEG, and GIF files—there's no need to create and reformat existing media for uploading to the system!



School

Used in a K–12 or higher-ed environment, the iCOMPEL gives you a simple-to-integrate platform for informing, alerting, and notifying students and staff in your buildings or on your campus. With the iCOMPEL, it's easy

to build eye-catching signage and stream content from your school Web site, a campus TV studio, a central administration office, and your AV and IT departments—without adding any technical or creative staff.

Healthcare

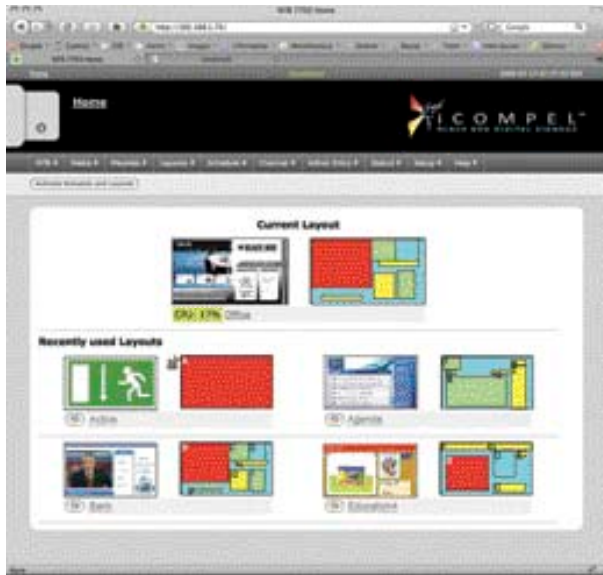
Hospitals, clinics, and doctors' offices can use the iCOMPEL to communicate more effectively with patients, visitors, and staff. The preloaded, easy-to-use design software enables the average office manager or PR specialist to quickly set up a messaging system in lobbies, waiting rooms, and cafeterias to broadcast announcements, menus, bulletins, and other time-sensitive information. Devote an area of the screen to promoting upcoming wellness clinics, professional development seminars, and other events. And because it's Web manageable, community relations staff and other administrators have a simple, cost-effective way to upload and distribute media for viewing in facilities across a large medical system.

Photo stills set up to rotate on a predefined schedule according to programmable playlist

Static or rotating text in an area of the screen devoted to promoting upcoming events

Stream local weather via XML feeds





Includes FREE layouts. Customize them how you like!

Sophisticated layout tools.

The software that comes preloaded on the iCOMPEL units includes a number of free layouts, so you can be up and running, displaying your choice of content in a professionally designed format within minutes. Or you can create your own.

The iCOMPEL intuitive layout and design tool makes it easy to create and modify layouts. Adjust, resize, position, and layer zones with a simple click and drag!

Also, you can manually set pixel or percentage measurements to achieve pixel-accurate alignment or lock a movie zone to a desired aspect ratio (16:9, 5:4, or 4:3).

Set up one or more screen layouts containing one or more rectangular zones for display. Every zone in the display layout has its own playlist to which you can add multiple stored media files.

You also get the flexibility to format text so it's consistent with the look and feel of your business' branding. That's because the iCOMPEL supports importing custom fonts. You can set their style, weight, and color, as well as control their scroll speed across the screen.

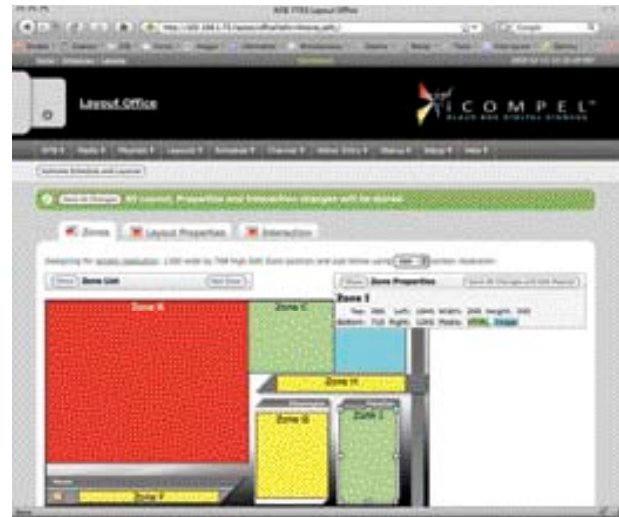
Schedule playlists for different times of the day.

All iCOMPEL appliances used in a publisher role can produce and control multiple content channels. This way, you can deliver a high-impact display to the particular audience or segment of customers before you, whether you need to show stored media or live media.

Every zone in the display layout can run on its own schedule. When you activate a schedule, the relevant media will appear, as laid out, on your display. Different layouts can be scheduled to play at different times of the day. Each playlist runs in a continuous loop per a preset schedule

You can also show a video file stored on its internal disk (or on models with a video capture card, show live video), show text from an internal feed, and more. Using the RSS subscriber features, you can easily display text crawl feeds from the Internet—which is great for streaming news or stock tickers.

Plus, all appliances support general-purpose input/output (GPIO) capabilities so content playing can be triggered (or halted) by signals originating from external device inputs. Attach a motion sensor, for example, and program the system to activate a screen when the sensor detects someone approaching—great for saving energy and extending screen life. Or set it up to provide emergency notification based on a signal sent when a secure door is opened or when an environmental condition occurs.



Resize and position items in precise increments or click and drag.



Activate scheduled content delivery from the playlist interface.

Key productivity tools:

- » Drag-and-drop layout, design, and zone manipulation tools
- » A playlist folder for automating content distribution
- » An interface for monitoring remotely over an IP network
- » A direct link to external info, such as Internet content, including RSS ticker feeds
- » A direct link to internal info for local content updates
- » "Ad hoc" function to quickly:
 - update messages
 - issue announcements
 - send out emergency alerts
 - set up visual paging
 - plug in table data
 - switch to live video (on iCOMPEL models with a built-in video capture card)
 - make a layout change on the fly

iCOMPEL: Simple Application

Use for standalone signage...

The iCOMPEL appliances work right out of the box with all software preinstalled and tested.

All the iCOMPEL appliances except for the subscriber-only models (ICOMP03-H, ICOMP03-S) work one of three ways:

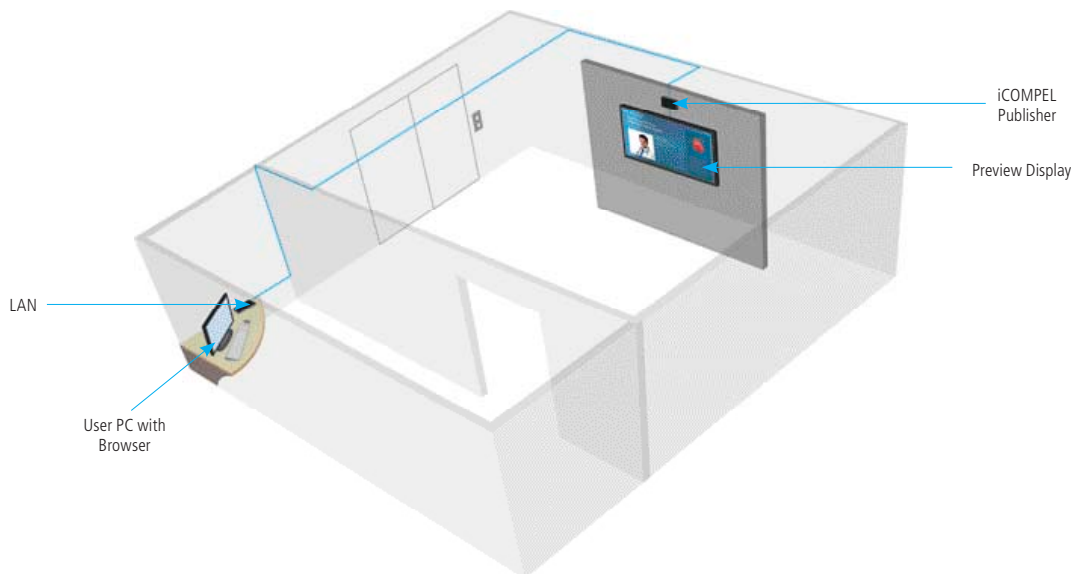
- As a **standalone player**, publishing to itself.
- As a **publisher**, through which you can create layouts, manage playlists, then publish one or more channels to itself as an FTP client or to a USB storage device or an external FTP client. It sends a snapshot of all required files to an FTP file server at a preconfigured location in your attached IP network.
- As a **subscriber**, pulling down new content and instructions from an FTP client, a USB storage device, or another iCOMPEL unit.

In a basic standalone setup (like that shown **below**), a single iCOMPEL connects directly to your network and to your display device.

Accessing the device can be done one of four ways: via a Web browser by providing an IP address along with a name and password; via an FTP client by providing a name and password (for uploading content to the iCOMPEL unit); Secure Shell (SSH) by giving an IP address and root password; or via a local keyboard (primarily to reset the unit). An Internet connection is required for streaming of Web-based content, including XML and RSS feeds.

The Linux® based appliance's built-in firewall keeps access limited to authorized users only, and there's no need to install any third-party software or virus protection. Plus, it uses HTTP and HTTPS security protocols, and supports the LDAP application protocol and VPN capabilities for secure remote access.

A typical standalone application:



How it works:

- 1 Connect your iCOMPEL unit to your computer network and to a display device such as an LCD or a plasma screen.
- 2 Apply power to the iCOMPEL unit. You'll see a boot sequence starting.
- 3 The iCOMPEL unit automatically obtains an IP address from the network and shows the address briefly on your display.
- 4 Access the unit through a Web browser using the IP address.
- 5 Time to get creative! Begin by uploading—copying and pasting—media files from your computer to the iCOMPEL system. The files are stored on the disk inside the unit.
- 6 You can then create one or more screen layouts containing one or more rectangular zones. Each zone has a playlist to which one or more of the stored media files can be added.
- 7 Add one or more layouts to a schedule, typically on a weekly basis.
- 8 Activate the schedule. The relevant media will appear in the layout you created on the display device. Each playlist runs in a continuous loop.
- 9 At the scheduled time and day of the week, different layouts will appear on the screen.
- 10 If you have an iCOMPEL model with video card (-VID versions), you can also stream live video from a CATV or satellite set-top box via the S-Video or Composite video input on the iCOMPEL. Just add the relevant video feed to your iCOMPEL playlist (unlike standard video files, which are stored on the disk inside the unit).
- 11 To show text from an RSS newsfeed, just enter the URL of the Internet feed into the iCOMPEL (which may also need to be configured to access the Internet). Use a similar process when you want to display actual Web pages.

...or in large multiscreen, multisite applications.

Like in the standalone application, iCOMPEL units function as standalone players, as publishers, and as subscribers in more elaborate multisite deployments, too.

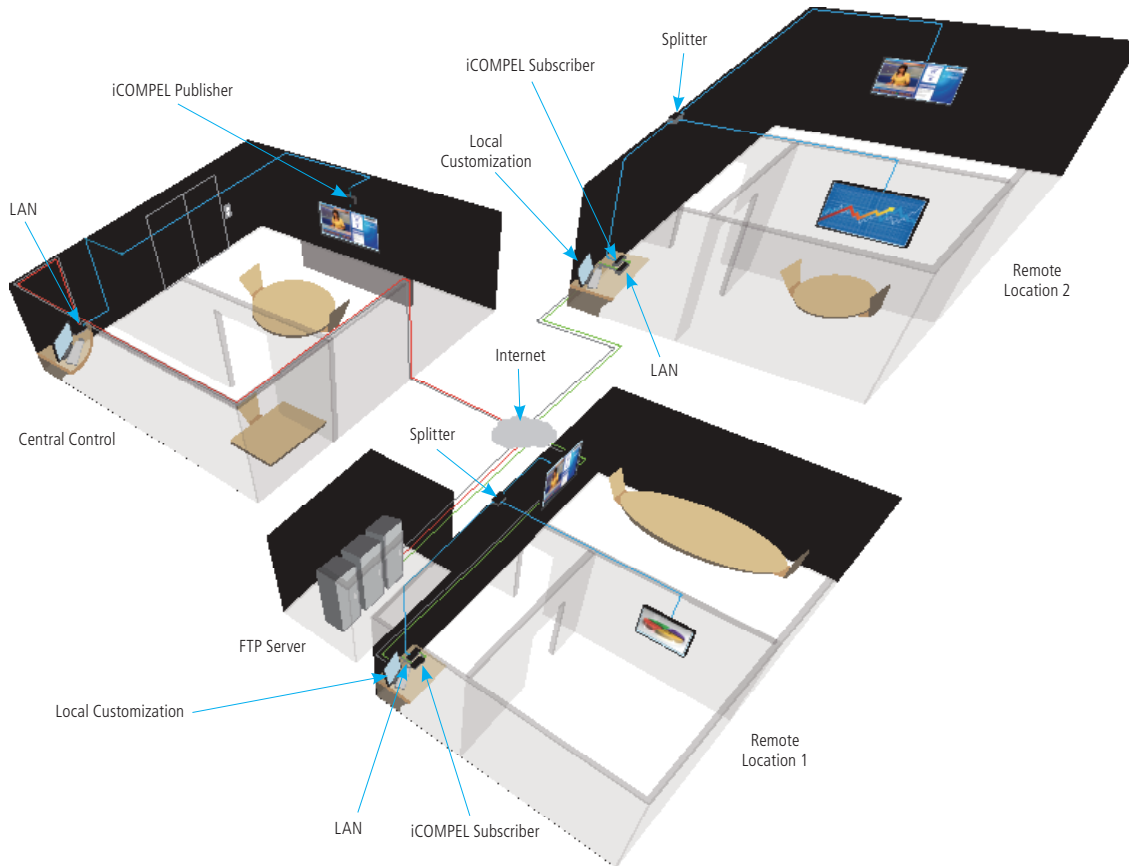
Used in a multisite application, however, the iCOMPEL appliance clones its media from another iCOMPEL unit over a network, acting as a *channel manager*, with the same digital signage presentation showing on screens at different sites at specific times. And when working as *channel subscribers*, the iCOMPEL units automatically download and show a channel that's been published by another iCOMPEL unit.

You can also log into each subscriber and customize content on an "ad-hoc" basis. All iCOMPEL appliances support this function, but it's particularly useful in multiscreen applications where you want to locally update screen content to issue alerts or customize content for specific audiences. Ad-hoc messaging can be scrolling text, text entries in a table, a collection of files in a folder, and similar content.



Update messaging in real time with "ad-hoc" capabilities. A welcome message (like that shown here), can be rewritten for the specific site where the iCOMPEL subscriber is located, replacing the default content on a specific screen.

A typical multisite application with local "ad-hoc" customization:



How it works:

One iCOMPEL unit is designated as a *channel publisher* and your current schedule is published as a collection of files on the *channel server* (either the iCOMPEL unit itself or a file server on the Internet).

You then designate other iCOMPEL units as *channel subscribers*, which download all required files from the channel server and activate the new schedule. The subscribers then poll the publisher periodically for changes that may have been republished, downloading new content and deleting redundant content automatically.

Media on the publisher is designated as "ad-hoc" when added to a playlist on the channel publisher. A user with ad-hoc access can log into a subscriber and change the ad-hoc content, replacing the content that you've assigned as the default content. Even if the ad-hoc content is changed on the publisher end and the channel is republished, the subscriber will continue to display the local custom content. However, if the ad-hoc content is removed from the publisher's playlist, then the local custom content is deleted from all subscribers.

iCOMPEL: Choose Your Model

Choose from three iCOMPEL families.

The HD Plus High-Speed family:

- Features Intel® Pentium® Core 2 Duo processors and the highest video processing of all iCOMPEL versions.
- Provides a maximum output resolution up to 2048 x 1536 and features both digital DVI-D video and analog VGA video ports.
- Boasts robust onboard media storage capabilities with a 500 GB, 7200 RPM HDD, as well as 2 GB of RAM.
- Provides up to four video zones—great for showing a mix of different video feeds side by side! Plus, zones can be displayed with transparency.
- Enables you to set up 15 zones for playing HTML content, as well as an unlimited number of text, stills, and audio zones.
- Supports connections to 10-/100-/1000-Mbps Ethernet networks and includes six USB ports (two on the front).
- To also play live video, order the ICOMP-VID model. It has a built-in video capture card with connectors for plugging in a CATV or satellite set-top box. It features a video capture resolution of up to 640 x 480.
- Can be ordered with a kit for mounting on a wall or in a rack.



The HD Plus family:

- Has a 1.6-GHz Intel Atom™ processor.
- Output resolution up to 2048 x 1536.
- Equipped with a VGA video port.
- Supports two video zones, up to 15 HTML zones, and unlimited text, stills, and audio zones.
- Offers 160 GB, 5400 RPM HDD storage integrated into unit itself—no external drives required for media—plus 1 GB of RAM.
- Connects to 10-/100-/1000-Mbps Ethernet networks and includes six USB ports (two on the front).
- Order the ICOMP01-VID version with integrated video capture card for live video links via a set-top box. It features a video capture resolution of up to 640 x 480.
- Can be ordered with a kit for mounting on a wall or in a rack.



The HD family:

- Has a 1.6-GHz Intel Atom™ processor.
- Output resolution up to 2048 x 1536.
- Features DVI and VGA video ports.
- Includes 160 GB, 5400 RPM HDD or 32 GB solid state drive media-storage capabilities, as well as 1 GB of RAM.
- Supports two video zones, up to 15 HTML zones, and unlimited text, stills, and audio zones.
- Connects to 10-/100-/1000-Mbps Ethernet networks and includes three USB ports.
- Slim and compact! Measures just 1" high and is VESA screen mountable for attaching to the back of a screen.
- The ICOMP02 can be used as a network publisher or standalone unit; the ICOMP03 works as a subscriber only.
- Can be ordered in ruggedized, solid-state memory versions with no moving parts. They're ideal for areas with lots of equipment vibration.



Media supported:

- » JavaScript
- » PowerPoint
- » Flash 9
- » Real™ 1, 2, 3, 4
- » MPEG 1, 2, 4 (DivX®)
- » QuickTime
- » AVI
- » MP3 and WAV
- » GIF, TIFF, JPEG, BMP, and PNG still images
- » Static or scrolling text—in any direction or at various speeds
- » HTML (set up one or more zones as a Web page from an existing Web server or an intranet)
- » XML feeds
- » RSS subscriber feeds (to automatically collect and display dynamic textural feeds from the Internet)
- » Live video (on the -VID models with built-in S-Video and Composite connectors via their video capture card)

Need advanced capabilities?

Please contact our FREE 24/7 Tech Support at 724-746-5500 and tell us about your application and requirements. We'll discuss how the iCOMPEL can be used for your specific needs.

Also ask about the advanced emergency notification capabilities of the iCOMPEL system. In addition to providing the traditional benefits of digital signage for marketing, merchandising, and education purposes, the iCOMPEL offers override messaging, which means the system can be used as a real-time emergency notification and crisis-management solution—this is particularly useful in education or government building settings. If a crisis occurs, administrators or security personnel can issue evacuation notices or lockdown alerts from a previously programmed iCOMPEL playlist. We'll explain how.

What customers are saying:

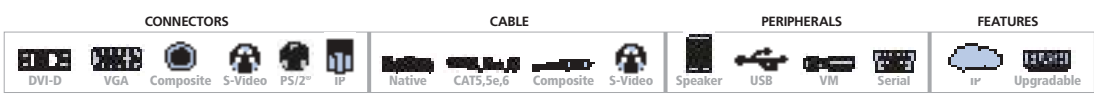
"The iCOMPEL is a great product that we are happy to add to our product mix. Its power and flexibility make it a great fit for many applications. Our customer immediately saw the value in using two units, one for static display in the newly renovated lobby and one for use as an information channel on the hospital's cable distribution system. Our research into competitive products showed that no other solutions offered the mix of features and flexibility at this price point. We are excited about future signage options with iCOMPEL."

John D. Raymond, Vice President
Convergentech, Muzak of Toledo, Zaiser Communications Companies









"I really liked the flexibility of the iCOMPEL system. It has multiple zones and if I want to add live feeds, local news, the time, etc., I can... It's visual entertainment."

Kevin Wall
Sound Environments

iCOMPEL: Choose Your Model



Buyer's Guide | iCOMPEL

	iCOMPEL HD Plus High-Speed Digital Signage Appliance	iCOMPEL HD Plus Digital Signage Appliance	iCOMPEL HD Digital Signage Appliance	iCOMPEL HD Subscriber Digital Signage Appliance*
Features and Specifications				 * A peripheral model is required for operation.
HD Media Player	• (Not video capture)	• (Not video capture)	•	•
Maximum Output Resolution	Up to 2048 x 1536	Up to 2048 x 1536	Up to 2048 x 1536	Up to 2048 x 1536
Standalone Player	•	•	•	—
Local Layout Creation/Editing	•	•	•	—
Central Media Publisher	•	•	•	—
Subscriber Player	•	•	•	•
Transparent Zone Capable	•	•	•	•
Portrait Mode	•	•	•	•
VESA Screen Mountable	—	—	•	•
Text, Stills, and Audio Zones	Unlimited	Unlimited	Unlimited	Unlimited
Video Zones	4	2	2	2
HTML Zones	15	15	15	15
CPU Processor	Intel® Pentium® Core 2 Duo	1.6-GHz Intel Atom™	1.6-GHz Intel Atom™	1.6-GHz Intel Atom™
Media Storage	500 GB, 7200 RPM HDD	160 GB, 5400 RPM HDD	160 GB, 5400 RPM HDD or 32 GB Solid State Drive	160 GB, 5400 RPM HDD or 32 GB Solid State Drive
Fanless	—	—	•	•
Memory (RAM)	2 GB	1 GB	1 GB	1 GB
Internal Power Supply	•	•	—	—
Video Capture Resolution (on ICOMP-VID & ICOMP01-VID)	Up to 640 x 480	Up to 640 x 480	—	—
Connectors	 (1) HD15 F (VGA); (1) DVI-D F; (1) RJ-45 (10/100/1000); (1) DB9 M (RS-232); (2) 6-pin mini DIN F (keyboard/mouse); (6) USB Type A F; (3) 3.5-mm F audio; optional (1) 4-pin mini DIN F (S-Video) and (1) RCA F (Composite video) on -VID version	 (1) HD15 F (VGA); (1) RJ-45 (10/100/1000); (1) DB9 M (RS-232); (2) 6-pin mini DIN F (keyboard/mouse); (6) USB Type A F; (3) 3.5-mm F audio; optional (1) 4-pin mini DIN F (S-Video) and (1) RCA F (Composite video) on -VID version	 (1) HD15 F (VGA); (1) DVI-D F; (1) RJ-45 (10/100/1000); (1) DB9 M (RS-232); (3) USB Type A; (1) 3.5-mm F audio	 (1) HD15 F (VGA); (1) DVI-D F; (1) RJ-45 (10/100/1000); (1) DB9 M (RS-232); (3) USB Type A; (1) 3.5-mm F audio
Power	Input: 100–240 VAC, 50–60 Hz; Consumption: 60 W	Input: 100–240 VAC, 50–60 Hz; Consumption: 45 W	Input: 100–240 VAC, 50–60 Hz; Consumption: 12 W	Input: 100–240 VAC, 50–60 Hz; Consumption: 12 W
Size	3"H x 11"W x 10.5"D	3"H x 11"W x 10.5"D	1"H x 10"W x 6.5"D	1"H x 10"W x 6.5"D
Weight	9.4 lb.	8.75 lb.	2.9 lb.	2.9 lb.
Ordering Information				
Base Unit (Hard Drive)	ICOMP	ICOMP01	ICOMP02-H	ICOMP03-H
Base Unit (Ruggedized Solid-State Drive)	—	—	ICOMP02-S	ICOMP03-S
Base Unit with Video Capture	ICOMP-VID	ICOMP01-VID	—	—
Wallmount Kit	ICOMP-WALL	ICOMP-WALL	—	—
Rackmount Kit	ICOMP-RACK	ICOMP-RACK	—	—

NOTE: Need assistance ordering your iCOMPEL appliance or designing your complete end-to-end digital signage system? Just call our FREE, 24/7 Tech Support at 724-746-5500. All information appearing in this brochure (including specifications, part numbers, and pricing) is subject to change without notice.

FREE, live help in 20 seconds or less!



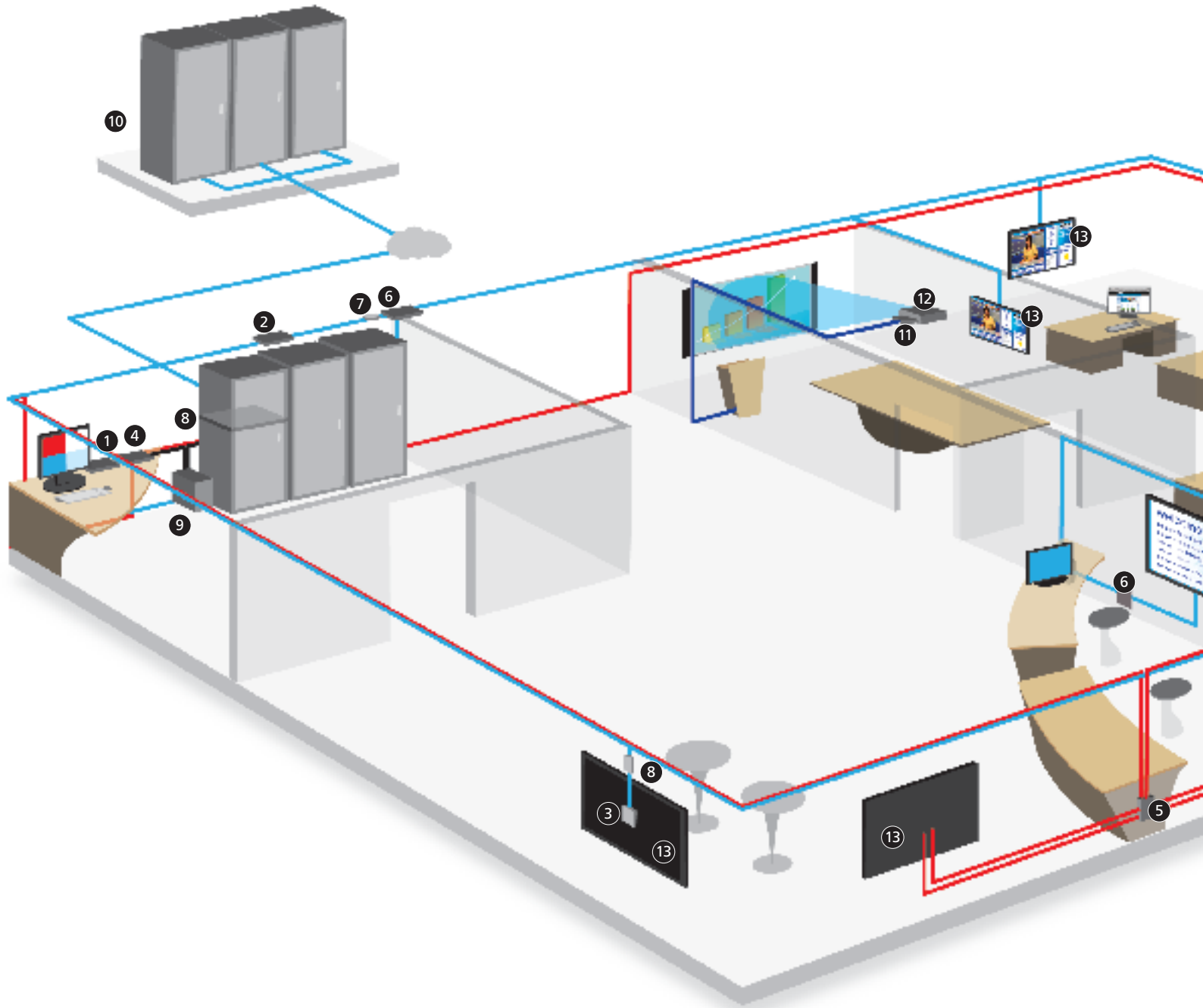
iCOMPEL + Black Box: The One-Company Solution

Black Box: the total one-company solution

Black Box is not only your source for digital signage players, as well as professional-grade screens, we're also the industry-leading provider of everything behind the screens! And we mean everything—video/audio splitters, extenders, switches, converters, scalars, plus all the hardware you need to integrate your multimedia distribution and management system into your existing IT infrastructure. Not only are we knowledgeable about today's

latest and greatest AV components, but we know IT networks, too. Black Box has been handling IT for well over 30 years.

Plus Black Box has a wide selection of cabling and connectors, patch panels, raceways, and cabinets, along with power protection equipment, cable link testers, and termination tools galore! The illustrated diagram here shows how some of these components work in a typical iCOMPEL environment.

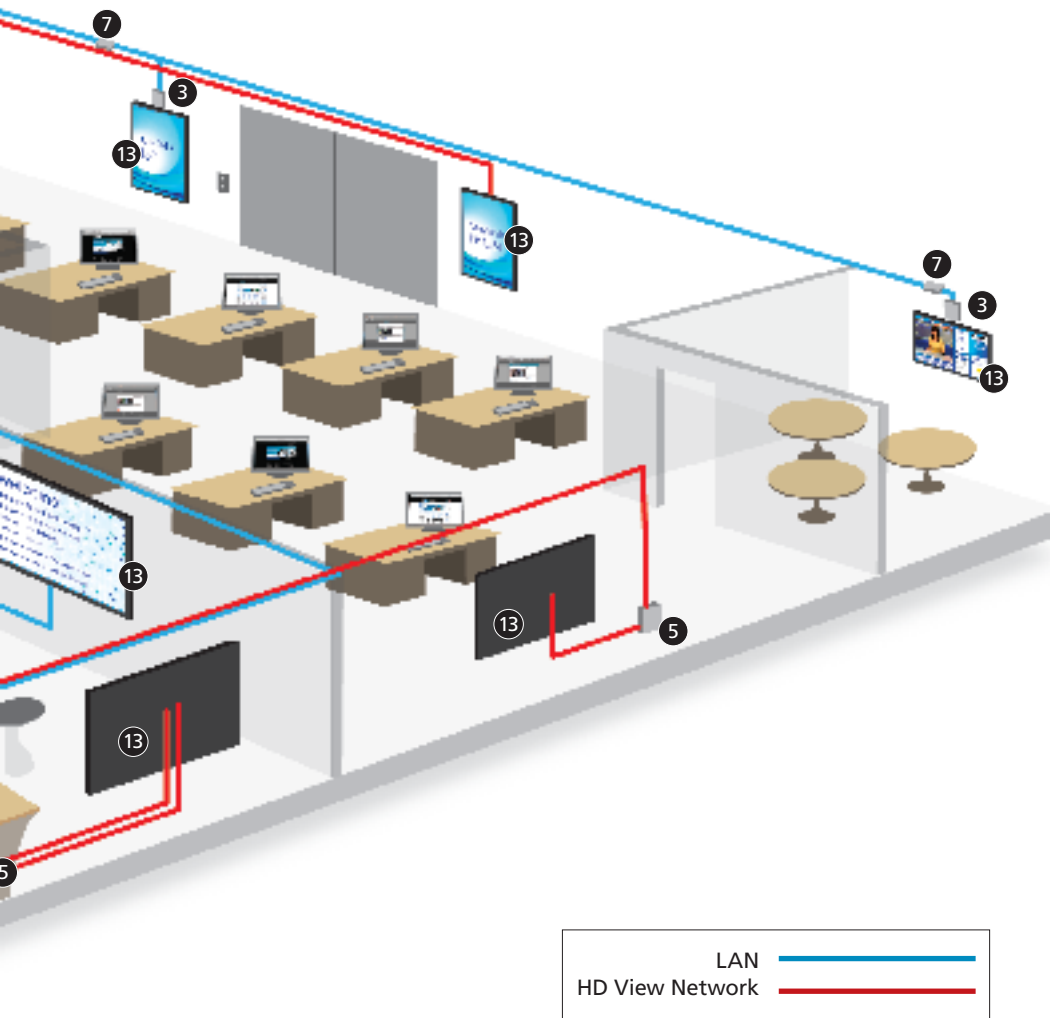


Watch our videos!

To see how to plan a digital signage deployment step by step and watch a video demo of how the iCOMPEL software works, visit our Tips for Techs video resources at blackbox.com/go/videos.



a BLACK BOX production
Go to blackbox.com/go/videos.



Products shown in the diagram:

- 1 ServSwitch™ 4site (KVP4000A)**
This KVM switch enables control of four multimedia servers from one keyboard and mouse, displaying the video from the servers on one monitor at the same time.
- 2 iCOMPEL™ Appliance (ICOMP) Used As Publisher**
Here, we show how the iCOMPEL appliance is used as a publisher to distribute content over the LAN.
- 3 iCOMPEL Appliances (ICOMP) Used As Subscribers**
These iCOMPEL appliances receive the content distributed over the LAN.
- 4 HD View Transmitter (AC3000A)**
Use it to broadcast high-def video, stereo audio, and RS-232 data over CATx cabling separate from that used for iCOMPEL LAN-based distribution.
- 5 HD View Receiver (AC3003A/AC3005A)**
This unit receives the multimedia signals sent from the HD View Transmitter.
- 6 Pure Networking™ 10/100 Ethernet Switches (LB8505A-R2)**
These affordable switching devices manage traffic on the LAN segments.
- 7 CAT6 In-Line Surge Protectors (SP529A)**
Don't forget to protect cable interfaces from damaging power surges
- 8 ServPower Omni (PS730A)**
Install this 8-outlet networked power strip in a cabinet to set up out-of-band power management. Great for saving energy!
- 9 APC® Smart-UPS (SUA1500)**
Provide battery backup and enable safe system shutdowns on devices linked in your digital signage network.
- 10 FTP Service**
Use it to transfer multimedia files.
- 11 Wireless Video Presentation System II (AC1131A)**
This ceiling-mounted receiver enables up to 254 Wi-Fi® laptop users to stream PC or Mac® video through a VGA projector.
- 12 SVGA Projector**
Run brilliant, color-rich presentations using one of our 1080p SVGA projectors. Call us for the latest offerings.
- 13 Professional-Grade LCDs with Wallmounts**
We also offer many professional-grade LCD screens. Call us for the latest versions, as well as mounting hardware for the screens.

You'll find it at Black Box.

The right products, the right support, and the right pricing.

Comprehensive digital signage, audio/video, multimedia, and networking solutions.

Get the objective advice you need, the industry-leading technology you want, and the real support you can count on from Black Box Network Services.



- » Media Players
- » Converters
- » KVM Switches & Extenders
- » Extenders
- » LCD & Plasma Screens
- » Display Controllers
- » Splitters
- » LCD Projectors
- » Media Storage Devices
- » Video Switches
- » Cables & Connectors
- » Media Cabinets & Racks

Why buy from Black Box? Exceptional value. Exceptional Tech Support. Period.

Recognize any of these situations?

- You wait more than 30 minutes to get through to a vendor's tech support.
- The so-called "tech" is a customer service rep who can't help you.
- You don't have a purchase order number or a credit card so the tech won't help you.
- It's 9 P.M. and you need help, but your vendor's tech support line is closed.

According to a survey by *Data Communications* magazine, 90% of network managers surveyed say that getting the technical support they need is extremely important when choosing a vendor. But even though network managers pay anywhere from 10 to 20% of their overall purchase price for a basic service and support contract, the technical support and service they receive falls far short of their expectations—and certainly isn't worth what they paid.

At Black Box, we guarantee the best value and the best support. You can even consult our Tech Support experts—FREE of charge—before, during, and long after your transaction. It's all part of our commitment to your success.